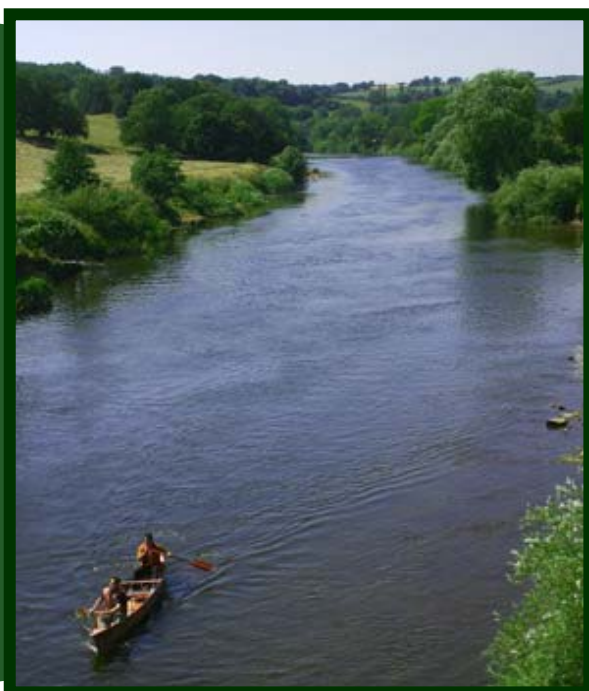
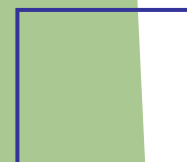


Watershed: The region draining into a river, river system, or other body of water. All of us live in a watershed. Each of us is responsible for a portion of the pollution entering our waterways. Common tasks like washing our cars and fertilizing our lawns end up impacting our water quality. We are committed to improving our water quality through a series of outreach programs. If you are interested in joining, please contact: Tommy Vincent at (601) 484-2564 or trvincen@southernco.com for more information on how you can help keep our waters clean and safe.

**East MS Foothills
Land Trust**
www.emflt.org



Weekends in the Watershed!

*Spend this weekend in the Chunky-Okatibbee
Watershed!*



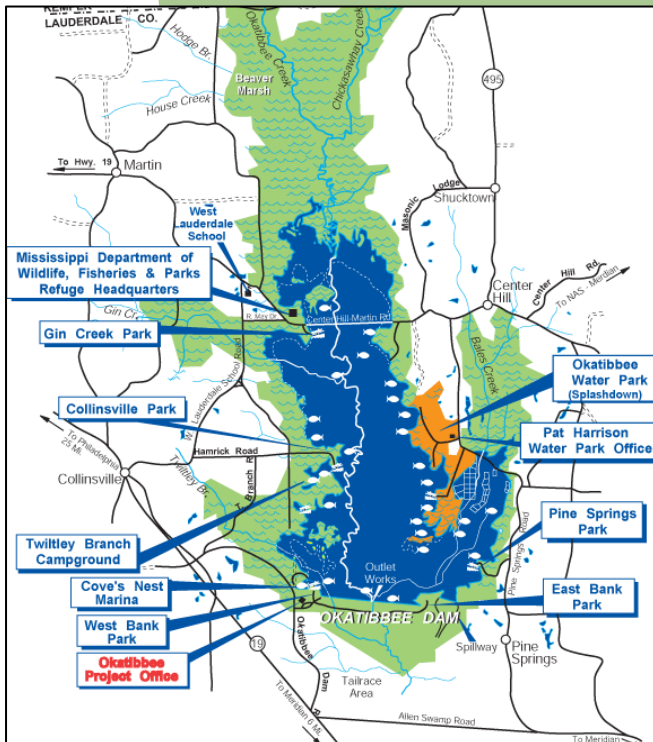
3-day weekend getaway with your kids!

Take the kids out for a weekend they'll remember! And you can do it right here in MS! Here is a sample itinerary for your next getaway:

- **Day 1:**
 - Fishing at Okatibbee Reservoir
 - Camping at Twitley Branch Campground
- **Day 2:**
 - Splashdown WaterPark
 - Spend the night camping or in Splashdown's Motel.
- **Day 3:**
 - Bird/Wildlife Sighting at Okatibbee Wildlife Viewing Area
 - Boating or Canoeing on the Lake
 - Back home
- **Some alternatives:**
 - Start at Turkey Creek Water Park in Decatur, MS and then canoe down the Chunky River to Dunn's Falls in Enterprise, MS.
 - Enterprise is also the home of a historical Confederate Cemetery.
 - Dunn's Falls provides camping areas, hiking trails, and much more!
 - Bonita Lakes is right outside of the watershed area and offers camping, canoeing, horseback riding, and more!

WHILE YOUR OUTSIDE:

Take some time to enjoy our beautiful watershed area. Our watershed serves the Chunky and Okatibbee Rivers and impacts 5 counties. As it rains, the water seeps into the ground and flows across the watershed area into these and other water bodies. Ultimately, this "stormwater" travels down through the Pearl River Basin and into the Mississippi Sound. As it travels it picks up pollutants and silt from the ground. Because of this, our impact on ground water quality is much greater than you might expect. Simple things like washing your car can contribute greatly to groundwater pollution.



Here are some things you can do to help out the environment:

- Recycle used motor oil.
- Inspect your septic system regularly.
- Don't litter!
- Fertilize less often.
- Wash your car/boat at approved wash stations with proper drainage.
- Spread the word:
 - Stenciling Programs
 - River/Creek Clean-ups
 - Adopt-a-stream
 - Adopt-a-Stormdrain

CONTACTS:

Twitley Branch Campground

9200 N. Hamrick Road, Collinsville, MS
601-686-8068

50 individual sites each with water and electricity

Splashdown Country

9283 Pine Springs Rd, Meridian, MS
601-737-2370

Park features fully developed camping spots, with 50 amp electrical service, for camping enthusiasts. For the slightly less adventurous, four new vacation cabins are available as well as a 25-room motel

Turkey Creek Waterpark

142 Parkway Dr., Decatur, MS
601-635-3314

Park has 22 camping spurs with water and electricity as well as cabins

Dunn's Falls

(601) 644-1361

Located on the Chunky River, this 65-foot waterfall was once used as a power source. A natural wildlife refuge, picnic area with grills, gristmill pond, hiking, and swimming areas. Open daily Oct-March, 9a.-5p; April thru Sept., 9a.-7p. Take I-20/59 S. to Savoy Exit.

Bonita Lakes RV Park

895 Hwy. 19 S., Meridian, MS
601-483-4330

50 spacious RV pads, 20 pull-thru sites, swimming pool, fishing lake, handicap accessible.

